

# ATTIRE

## Bridal

NOVEMBER/DECEMBER 2015 ISSUE 50



*Picture perfect*  
Pinterest made easy

*Prom trends*  
We look ahead to 2016

**Plus-size gowns**  
Designs to flatter  
feminine curves

**HARROGATE  
REVIEW**

**Plus**

- ✿ Business tips
- ✿ News and events
- ✿ Retail technology

**Luxurious lingerie**  
This season's bestsellers

*Celebrating our 50<sup>th</sup> issue!*

WWW.ATTIREBRIDAL.COM

# The Collections

We showcase a collection of fabulous accessories to match our two key fashion features.



Benjamin Adams  
[www.benjaminadamslondon.com](http://www.benjaminadamslondon.com)



Pink by Paradox  
[www.paradoxlondon.com](http://www.paradoxlondon.com)



Glitzy Secrets  
[www.glitzysecrets.com](http://www.glitzysecrets.com)



Emmerling  
[www.emmerling.co.uk](http://www.emmerling.co.uk)

## Many happy returns

Enhance pretty backs and illusion fabrics with stunning shoes and headpieces.

## TO BOLDLY GO

Standout accessories to accompany this season's most dramatic designs.



Rachel Simpson  
[www.rachelsimpsonshoes.co.uk](http://www.rachelsimpsonshoes.co.uk)



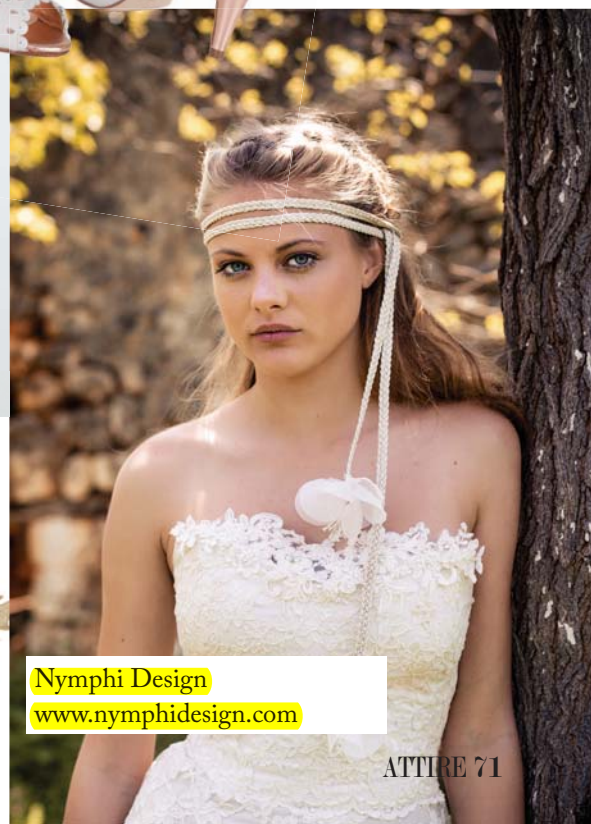
Lily Bella  
[www.lilybella.co.uk](http://www.lilybella.co.uk)



Richard Designs  
[www.richard-designs.com](http://www.richard-designs.com)



Stephanie Browne  
[www.stephaniebrowne.com.au](http://www.stephaniebrowne.com.au)



Nymph Design  
[www.nymphdesign.com](http://www.nymphdesign.com)

# Next Issue

Spotlight on prom



Ruby Prom



## Twinkle twinkle

Tiaras and hair decorations

## Special occasion shoes

Top footwear trends

Rachel Simpson Shoes



## London Bridal Fashion Week

Our advance preview



- Business tips
- News and events
- Retail technology

ISSUE 51

January/February 2016

Advertising deadline: 7<sup>th</sup> December, 2015

Available from: 1<sup>st</sup> January, 2016